

## How to arrive

### 1- LEAVING FROM UFLA

- Take bus line Novo Horizonte/UFLA, direction to Novo Horizonte.

**SENTIDO NOVO HORIZONTE**

**Dias Úteis:** ⤴

Horas	00	01	02	03	04	05	06	07	08	09	10	11	12	13	14	15	16	17	18	19	20	21	22	23
Minutos						50	25	00	20	00	20	00	20	00	20	00	20	00	20	40		00	10	
								40	45	40		40		40		40		40						

OS SEQUENTES HORÁRIOS AOS DIAS ÚTEIS: 07:20 - 08:40 - 10:00 - 11:20 - 12:40 - 14:00 - 15:20 - 16:40 - 18:00 - 19:20 - 20:40 - 22:00 - 23:10, ATENDERÃO PELA RUA Dr. SAMUEL GAMMON

(Chart 1 – Week days: Hours and Minutes)

**Sábados:** ⤴

Horas	00	01	02	03	04	05	06	07	08	09	10	11	12	13	14	15	16	17	18	19	20	21	22	23
Minutos						50		00	10	20	30	40	50		00	10	20	30	40	50		00	10	

Sábados, domingos e feriados: atendimento pela Rua Doutor Samuel Gammon, ida e volta.

**Domingos e Feriados:** ⤴

Horas	00	01	02	03	04	05	06	07	08	09	10	11	12	13	14	15	16	17	18	19	20	21	22	23
Minutos								00	10	20	30	40	50		00	10	20	30	40	50		00	10	

Sábados, domingos e feriados: atendimento pela Rua Doutor Samuel Gammon, ida e volta.

(Chart 2 – Saturdays, Sundays and Holidays: Hours and Minutes)

- Stop at the bus stop of the Bus Station (ask driver or exchanger).



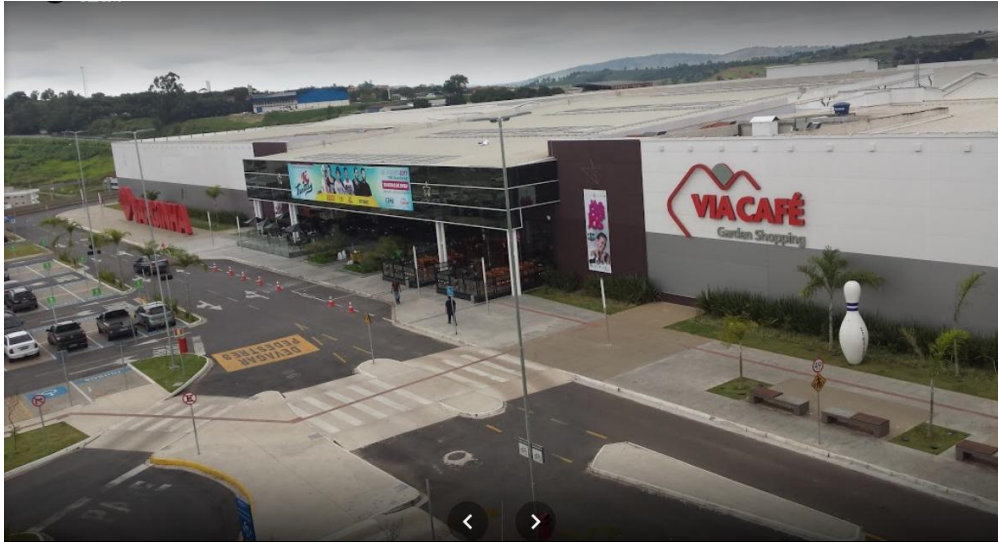
## 2- AT THE BUS STATION

- At Gardênia counter, ask for ticket to Varginha
- Ticket price ranges from R\$ 40,00 to R\$ 50,00
- Trip duration: Approximately 3h00min
- Link to consult schedules and availability of chairs:  
<<http://expressogardenia.com.br/>> search in the area “Compra de Passagens” (Buy Tickets).

## 3- IN VARGINHA

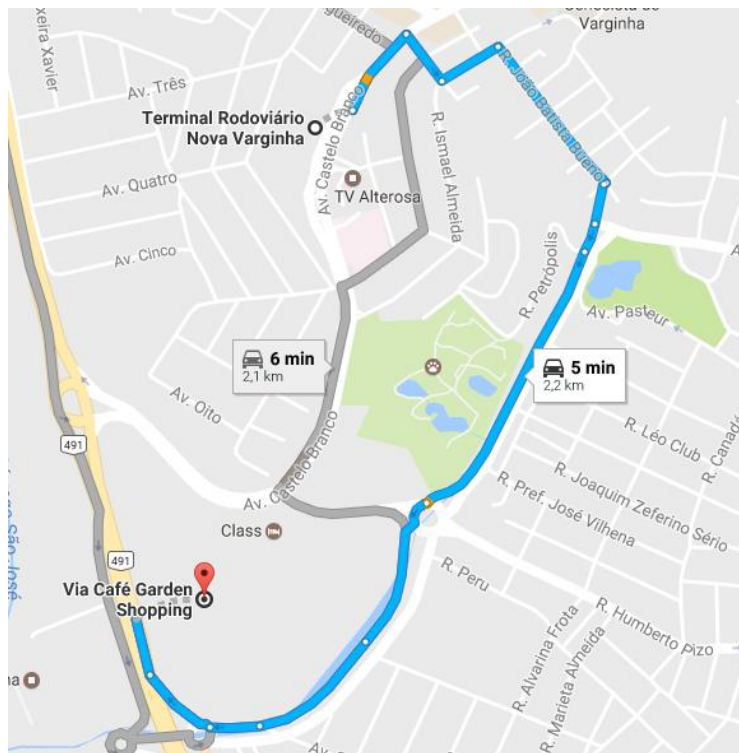
Leaving the Bus Station

- The Polícia Federal (Federal Police) of Varginha is situated inside the Via Café Garden Shopping Mall (1,5km from the bus station).

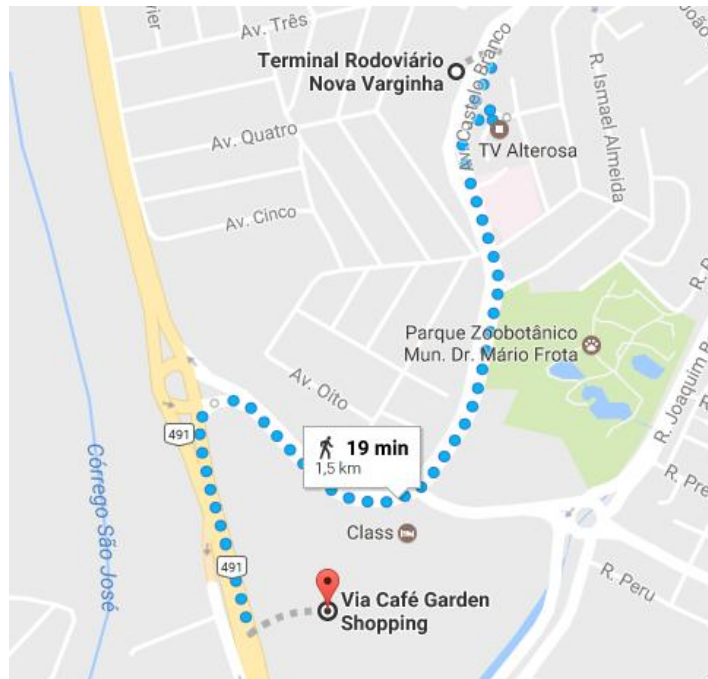


- We suggest to take a taxicab or to go, as disclosed bellow.

Taxicab (5 minutes)



On foot - walking (19 minutes)



- In case you choose to go by bus, take the line Barcelona/Rodoviária or Mont Serrat/Rodoviária, both in the direction to Centro (downtown).

Observation: Both lines leave from the bus station and the first bus stop is the Via Café Garden Shopping Mall.

Schedule:

Barcelona/Rodoviária Line

SENTIDO CENTRO																								
<b>DIAS UTEIS:</b>																								
Horas	00	01	02	03	04	05	06	07	08	09	10	11	12	13	14	15	16	17	18	19	20	21	22	23
Minutos						20	05	05	15	35	15	05	05	05	15	35	15	35	15	35	35	35	35	30
						35	35	35	55			35	35	20	55		55		55					
Horários de 07:05, 07:35, 11:35, 12:05, 12:35, 13:05, 13:20, 16:55, 17:35, atendem à COPASA																								
<b>DOMINGO E FERIADOS:</b>																								
Horas	00	01	02	03	04	05	06	07	08	09	10	11	12	13	14	15	16	17	18	19	20	21	22	23
Minutos						40	15	00	30	30	30	30	30	30	30	30	30	30	30	30	30	30	30	30
						45																		
Horários de 07:45, 13:30, 18:30, atendem à COPASA.																								

## Mont Serrat/Rodoviária Line

### SENTIDO CENTRO

#### DIAS ÚTEIS:

Horas	00	01	02	03	04	05	06	07	08	09	10	11	12	13	14	15	16	17	18	19	20	21	22	23
Minutos						30	10	10	10	10	10	10	10	10	10	10	10	10	10	10	00	00	40	30
						50	30	30	40	40	40	30	40	40	40	40	40	30	40	35	30	50		
						50	50					50						50						

#### SABADO/DOMINGO:

Horas	00	01	02	03	04	05	06	07	08	09	10	11	12	13	14	15	16	17	18	19	20	21	22	23	
Minutos						35	05	05	05	05	05	05	05	05	05	05	05	05	05	05	05	40	30	35	30
						35	35	35	35	35	35	35	35	35	35	35	35	35	35	35	35				

### 4- To go back

#### Leaving from the Lavras Bus Station

- Bus line Novo Horizonte/UFLA, direction to UFLA.

### SENTIDO UFLA

#### Dias Úteis:

Horas	00	01	02	03	04	05	06	07	08	09	10	11	12	13	14	15	16	17	18	19	20	21	22	23
Minutos						30	15	25	00	20	00	20	00	20	00	20	00	20	00	00	20	40		
						50	40	40	40	40	40	40	40	40	40	40	40	40	40	40	40	40	40	40

O HORÁRIO DE 05:30 ATENDERÁ COM O ITINERÁRIO NOVO HORIZONTE / ESTAÇÃO OS SEGUINTE HORÁRIOS AOS DIAS ÚTEIS: 08:15 - 07:25 - 08:40 - 10:00 - 11:20 - 12:40 - 14:00 - 15:20 - 16:40 - 18:00 - 20:00 - 21:20 - 22:40, ATENDERÃO PELA RUA Dr. SAMUEL GAMMON

#### Direction to UFLA – Week days: Hours and Minutes

#### Sábados:

Horas	00	01	02	03	04	05	06	07	08	09	10	11	12	13	14	15	16	17	18	19	20	21	22	23
Minutos						15	25	35	45	55		05	15	25	35	45	55		05	15	25	35		

Sábados, domingos e feriados: atendimento pela Rua Doutor Samuel Gammon, ida e volta.

#### Domingos e Feriados:

Horas	00	01	02	03	04	05	06	07	08	09	10	11	12	13	14	15	16	17	18	19	20	21	22	23
Minutos							25	35	45	55		05	15	25	35	45	55		05	15	25	35		

Sábados, domingos e feriados: atendimento pela Rua Doutor Samuel Gammon, ida e volta.

#### Direction to UFLA – Saturdays, Sundays and Holidays: Hours and Minutes